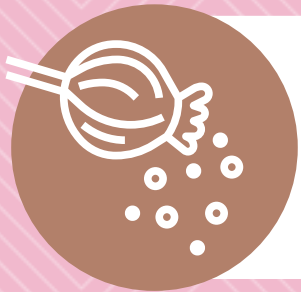




How Big is My Baby?



1 month

Poppy Seed

Heart, digestive system, back bone, spinal cord and neurons in brain are present



4 months

Avocado

Gender is revealed and nose is formed



7 months

Lettuce

Organs are maturing, eyes open and close, excellent chance of survival if born



2 months

Raspberry

Baby now has a detectable heart beat starting at six weeks



5 months

Bell Pepper

Hair, eyebrows and eyelids appear, momma feels baby move



8 months

Pineapple

Fingerprints are set, skin is wrinkly, momma feels lots of movement in the womb



3 months

Plum

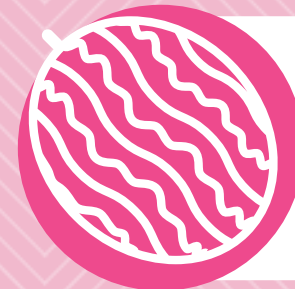
Arms, hands, legs, feet, fingers, toes and eyes are distinct; organ systems complete



6 months

Eggplant

eyebrows and fingernails are now developed



9 months

Watermelon

Lungs are mature, bones of skull are ossified, and skin is smooth, ready to be born!

Text "love" to 844-764-2029 • Many-Hearts.com • Call 515-571-9964